

# Desktop Printers RT863i



## 600 DPI superior printing quality on desktop printer

RT863i is most compact 600dpi with 300m ribbon desktop printer market. Equipped with leading technologies, RT863i performs the highest class of printing quality on affordable price.



Enlarged touch screen panel for intuitive and easy operation



Multiple interface plus optional WiFi, bluetooth for easy integration



Innovative "C" button makes label Calibration simple and fast



# Preliminary Specifications

## RT863i

### Desktop Printer

Model		RT863i
<b>Print Method</b>		Thermal Transfer / Direct Thermal
<b>Resolution</b>		600 dpi (24 dots/mm)
<b>Print Speed</b>		3 IPS (76.2 mm/s)**
<b>Print Width</b>		4.16" (105.6 mm)
<b>Print Length</b>		Min. 0.16" (4 mm)**; Max. 15" (381 mm)
<b>Processor</b>		32 Bit RISC CPU
<b>Memory</b>	<b>Flash</b>	128 MB Flash (60 MB for user storage)
	<b>SDRAM</b>	32 MB
<b>Sensor Type</b>		Adjustable reflective sensor (full range). Fixed transmissive sensor, central aligned
<b>Media</b>	<b>Types</b>	Continuous form, gap labels, black mark sensing, and punched hole; label length set by auto sensing or programming
	<b>Width</b>	Min. 0.79" (20.0 mm) – Max. 4.64" (118 mm)
<b>Label Roll Diameter</b>	<b>Thickness</b>	Min. 0.003" (0.076 mm) – Max. 0.008" (0.20 mm)
	<b>Core Diameter</b>	Max. 5" (127 mm)
	<b>Core Diameter</b>	1" (25.4 mm), 1.5" (38.1 mm)
<b>Ribbon</b>	<b>Types</b>	Wax, wax / resin, resin
	<b>Length</b>	984.25' (300 m)
<b>Ribbon Roll Diameter</b>	<b>Width</b>	1.18" Min. - 4.33" (30 mm - 110 mm) Max.
	<b>Core Diameter</b>	2.67" (68 mm)
	<b>Core Diameter</b>	1" (25.4 mm)
<b>Printer Language</b>		EZPL, GEPL, GZPL, GDPL auto switch
<b>Label Design Software</b>		GoLabel (for EZPL only)
<b>Software Driver</b>		Vista, Windows 7, Windows 8 & 8.1, Windows 10, Windows Server 2008 R2, 2012, 2012 R2, 2016, 2019, MAC, Linux
<b>SDK</b>		Win CE, .NET, Windows Vista, Windows 7, Windows 8 & 8.1, Windows 10, Android, Mac, iOS
<b>Resident Fonts</b>	<b>Bitmap Fonts</b>	6, 8, 10, 12, 14, 18, 24, 30, 16X26 and OCR A & B Bitmap fonts 90°, 180°, 270° rotatable, single characters 90°, 180°, 270° rotatable Bitmap fonts 8 times expandable in horizontal and vertical directions
	<b>TTF Fonts</b>	TTF Fonts (Bold / Italic / Underline ). 0°, 90°, 180°, 270° rotatable
<b>Download Fonts</b>	<b>Asian Fonts</b>	Bitmap fonts 90°, 180°, 270° rotatable, single characters 90°, 180°, 270° rotatable 16x16, 24x24. Traditional Chinese (BIG-5), Simplified Chinese(GB2312), Japanese (S-JIS), Korean (KS-X1001) 90°, 180°, 270° rotatable and 8 times expandable in horizontal and vertical directions
	<b>TTF Fonts</b>	TTF Fonts (Bold / Italic / Underline ). 0°, 90°, 180°, 270° rotatable
<b>Barcodes</b>	<b>1-D Bar codes</b>	China Postal Code, Codabar, Code 11, Code 32, Code 39, Code 93, Code 128 (subset A, B, C), EAN-8/EAN-13 (with 2 & 5 digits extension), EAN 128, FIM, German Post Code, GS1 DataBar, HIBC, Industrial 2 of 5, Interleaved 2-of-5 (1 of 5), Interleaved 2-of-5 with Shipping Bearer Bars, ISBT-128, ITF 14, Japanese Postnet, Logmars, MSI, Postnet, Plessey, Planet 11 & 13 digit, RPS 128, Standard 2 of 5, Telepen, Matrix 2 of 5, UPC-A/UPC-E (with 2 or 5 digit extension), UCC/EAN-128 K-Mart and Random Weight
	<b>2-D Bar codes</b>	Aztec code, Code 49, Codablock F, Datamatrix code, MaxiCode, Micro PDF417, Micro QR code, PDF417, QR code, TLC 39, GS1 Composite
<b>Code Pages</b>		CODEPAGE 437, 737, 850, 851, 852, 855, 857, 860, 861, 862, 863, 865, 866, 869, WINDOWS 1250, 1251, 1252, 1253, 1254, 1255, 1257 Unicode UTF8 · UTF16BE · UTF16LE
<b>Graphics</b>		Resident graphic file types are BMP and PCX, other graphic formats are downloadable from the software
<b>Interfaces</b>		Serial port: RS-232 (DB-9)
		USB Device port (B-Type)
		IEEE 802.3 10/100 Base-Tx Ethernet port (RJ-45)
		USB Host (A-Type) Parallel Port (Mini-Centronics)
<b>Control Panel</b>		Backlight 3.2" Touch Screen LCD
		Calibration button
		Control Key : FEED
		Power on/standby button
<b>Power</b>		Switching power 100-240VAC, 50-60Hz input
<b>Environment</b>	<b>Operation Temperature</b>	41°F to 104°F (5°C to 40°C)
	<b>Storage Temperature</b>	-4°F to 140°F (-20°C to 60°C)
<b>Humidity</b>	<b>Operation</b>	25-85%, non-condensing.
	<b>Storage</b>	10-90%, non-condensing.
<b>Agency Approvals</b>		CE (EMC) · FCC Class A · CB · UL · cUL
<b>Dimension</b>	<b>Length</b>	11.0" (280 mm)
	<b>Height</b>	7.7" (195 mm)
	<b>Width</b>	8.3" (210 mm)
<b>Weight</b>		5.9 lbs (2.7 Kg) ,excluding consumables
<b>Options</b>		Label dispenser
		Cutter
		External label unwind Stand
		External label rewinder
		Bluetooth
		Wireless LAN (IEEE 802.11 b/g/n) Real Time Clock (RTC)

\*Specifications are subject to change without notice. All company and/or product names are trademarks and/or registered trademarks of their respective owners.

\*\*Minimum print height and maximum print speed specification compliance can be dependent on non-standard material variables such as label type, thickness, spacing, liner construction, etc. GoDEX is pleased to test non-standard materials for minimum print height, and maximum print speed capability.

# Applications

## Applications for Labels & Barcodes

**RT863i** are the ultimate tool for barcode printings in any industry.



### Cosmetics

Shelf labels, product serial number labels, ingredients contents labels.



### Health Care

Tube tags, pharmaceutical labels, patient identification, medical records and laboratory specimen tags.



### Retail

Price tags, content labels, jewelry labels, courier tracking label, receipts for registered mails, bills of landing (B / L), postage labels, etc.

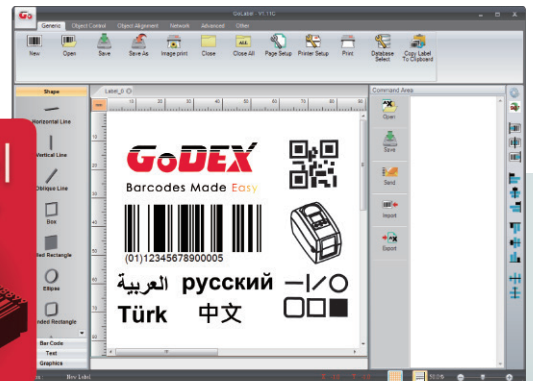
# GoDEX

## LABEL DESIGN SOFTWARE

GoLabel Software / User Friendly

GoLabel is based on a WYSIWYG (what you see is what you get) user interface, makes everything so easy for you to create and print barcode labels. GoLabel is the first-choice label design software that you can't miss it!

Go visit [www.godexintl.com](http://www.godexintl.com) and download GoLabel to experience it!



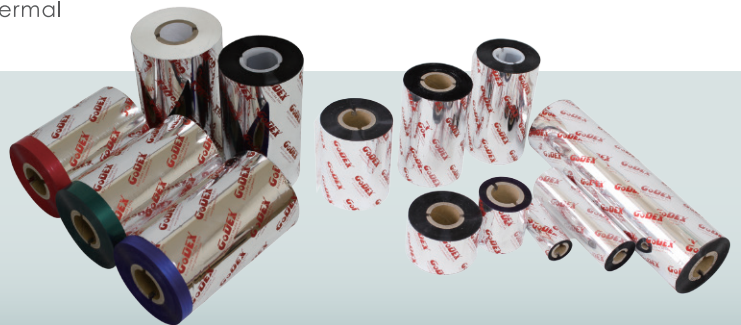
# GoDEX

## RIBBONS

High quality original GoDEX thermal transfer ribbons

GoDEX offers premium thermal transfer ribbons that will fit most of your printing applications.

- Wax
- Wax/ Resin
- Resin
- Near Edge



**GoDEX**  
[www.godexintl.com](http://www.godexintl.com)

Godex International  
( Headquarters )  
Telephone : +886 2 2225 8580  
Contact us : [infoGT@godexintl.com](mailto:infoGT@godexintl.com)

Godex Americas  
Telephone : +1 805 987 5100  
Contact us : [infoGA@godexintl.com](mailto:infoGA@godexintl.com)

Godex China  
Telephone : +86 21 56651313  
Contact us : [infoGC@godexintl.com](mailto:infoGC@godexintl.com)

Godex Europe  
Telephone : +49 2195 59599 0  
Contact us : [infoGE@godexintl.com](mailto:infoGE@godexintl.com)