

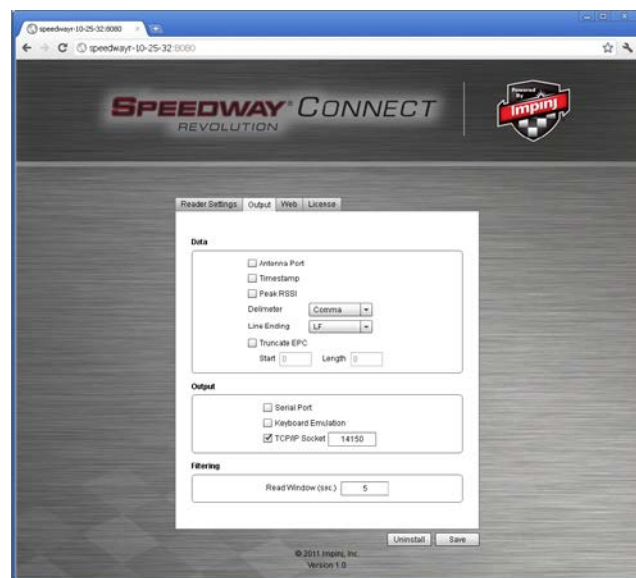


Getting Started Guide to Speedway® Connect 1.0 Software



Introduction

Speedway® Connect 1.0 is licensed software that runs on the Impinj Speedway Revolution and xPortal readers and enables users to easily plug-in RFID technology where barcode had previously been used – extending the reach of this powerful data collection technology. The simplified graphical user interface enables even those unfamiliar with RFID to set basic reader configurations. Data is passed to the PC application in keystrokes via USB-HID, serial, Ethernet or Web delivery for RFID deployment without costly software development or middleware expenses. Now's the time to move beyond barcode with Speedway Connect 1.0 software.



Obtaining software and license keys

Upon purchasing a Speedway Connect 1.0 license, your authorized Impinj reseller or distributor will provide you with the software and license key (one key is provided per reader); or a set of instructions on where to obtain the software and keys. In the latter case, you will need to provide the following in order to generate keys: reader serial number(s) and the invoice number with issuing business name. You may have already installed Speedway Connect 1.0 in a demo capacity. This software will only run for 500 reads without a license key.

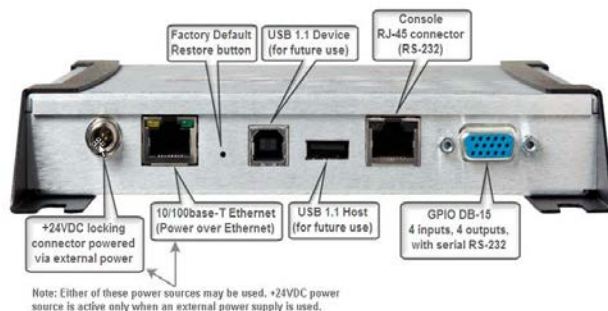
Getting Started with Speedway Connect 1.0

1. Load Speedway Connect software on your Speedway Revolution or Speedway xPortal reader.

If you received Speedway Connect 1.0 in a .upg file format, simply load it on the reader in the exact same way firmware is loaded. If the reader has firmware version 4.4 or higher, use the web interface to load the application (choose a file and click upgrade). If the firmware is below 4.4, please upgrade to the latest version before installing. Firmware upgrade files are available from your Impinj authorized partner and very easy to load using the WebUI as described here.

2. Attach cables to RFID system components.

1. Attach antennas to the reader as desired. Take care not to cross thread the antenna cable.
2. Connect the reader to a PC using a standard USB cable, RS-232 cable or Ethernet for TCP Port data.
 - a. The flat USB Host end will connect to the PC.
 - b. The “more square” USB device end will connect to the USB 1.1 Device port on the reader.
 - c. RS-232 pins are located on the reader’s 15 pin port.
 - Pin 2 – Receive
 - Pin 3 – Transmit
 - Pin 7 - Ground
3. Connect the Speedway Revolution to the Ethernet network.
4. Connect power to the Speedway Revolution and wait for the reader to boot. (~30 sec).



3. Configure reader and start reading tags.

1. Open the PC application into which RFID reader data will be entered.
2. Place the PC cursor in the data field into which RFID data will be entered.
3. Point the PC browser to <http://speedwayr-xx-xx-xx:8080> where xx-xx-xx are the last 6 characters of the MAC. You can also use the reader IP address if it is known.
4. Configure the application as desired, enter the license key if available and click [Save]. The app will start running after the [Save] button is clicked. Once configured, the reader does not need to remain connected to the Ethernet network.

Configuration Options available with Speedway Connect 1.0

- a. Reader Mode
- b. Search Mode & Session
- c. Transmit Power
- d. Receive Sensitivity
- e. Enable Antennas
- f. Start and Stop Triggers



Output Options available with Speedway Connect 1.0

- a. USB via Keyboard Wedge
- b. RS-232
- c. TCP Port
- d. HTTP Post

The Read Window setting (on the Output tab) allows you to ignore tags for a certain period of time. For example, if you set this value to 5 seconds, each tag will be read once and not read again until the tag leaves the field of view for 5 seconds or longer. If you set this value to 0, Speedway Connect will not filter the tag results.

5. Placing a tag in the field of view of the antenna will send the EPC data into the PC application as if it were typed in with the keyboard, via RS-232 or to a TCP port depending upon how Speedway Connect has been configured.
6. The application will stop after 500 tag reads with no license key.

For more information, please view:

www.impinj.com

learn.impinj.com

Speedway Installation and Operations Manual (available at:
www.impinj.com/support/downloadable_documents.aspx)

Or, contact your authorized Impinj sales representative.

Revision History

Date	Revision	Comments
08/08/2011	1.0	-original release

Notices:

Copyright © 2011, Impinj, Inc. All rights reserved.

The information contained in this document is confidential and proprietary to Impinj, Inc. This document is conditionally issued, and neither receipt nor possession hereof confers or transfers any right in, or license to, use the subject matter of any drawings, design, or technical information contained herein, nor any right to reproduce or disclose any part of the contents hereof, without the prior written consent of Impinj and the authorized recipient hereof.

Impinj reserves the right to change its products and services at any time without notice.

Impinj assumes no responsibility for customer product design or for infringement of patents and/or the rights of third parties, which may result from assistance provided by Impinj. No representation of warranty is given and no liability is assumed by Impinj with respect to accuracy or use of such information.

These products are not designed for use in life support appliances, devices, or systems where malfunction can reasonably be expected to result in personal injury.