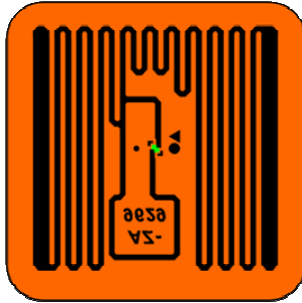


## AZ-9629+H3 White Wet Inlay Specification

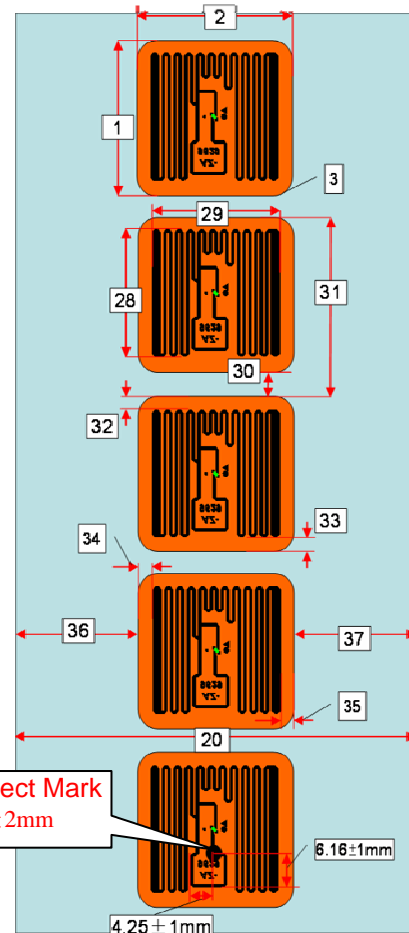
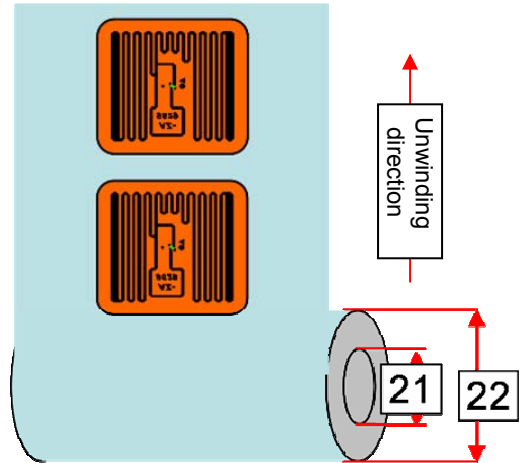
### 1. Physical Features

#### 1.1 Shape of Inlay



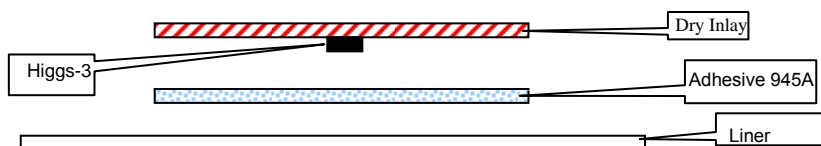
#### 1.2 Dimensions

Item	No.	Diameter (mm)
White Wet Inlay Length	1	25.50 ± 1.00mm
White Wet Inlay Width	2	25.50 ± 1.00mm
White Wet Inlay Corner Radius	3	R=1.50mm
Liner Width	20	60.00 ± 1.00mm
Core ID	21	3inch (76.20 ± 0.50mm)
Roll OD	22	≤ 210.00mm
Antenna Length	28	22.50 ± 1.00mm
Antenna Width	29	22.50 ± 1.00mm
White Wet Inlay Gap	30	6.25 ± 2.00mm
White Wet Inlay Pitch	31	31.75 ± 2.00mm
Antenna Top to PET Top	32	1.50 ± 1.50mm
Antenna Bottom to PET Bottom	33	1.50 ± 1.50mm
Antenna Left to PET Left	34	1.50 ± 1.50mm
Antenna Left to PET Right	35	1.50 ± 1.50mm
White wet Inlay Left to Liner(36)or White Wet Inlay right to Liner Right(37)		17.25 ± 1.50mm



Inlay Reject Mark  
Dia 5 ± 2mm

#### 1.3 Structure



## 2. Electrical Characteristics

Item	Description	Remark	
Chip	Alien/Higgs3		
Substrate	PET		
Antenna	Al Etching Al(9μm)+PET(50μm)		
Protocol	ISO/IEC 18000-6C EPC Class1 Gen2		
Memory	EPC	96Bits	Read & Write
	TID	32Bits	Read Only
	Unique TID	64Bits	Read Only
	Password	32Bits Visit Password 32Bits Destroy Password	Read & Write
	User	512Bits	Read & Write
Operating Frequency	860~960MHz		
Operating Mode	Passive		
Life	100,000 write cycles, 10 years data retention		
ESD Voltage Immunity	2000V	HBM	

## 3. Environment

Operating Temperature/Humidity:  $-5\sim 60^{\circ}\text{C}$  / 20%~60% RH.

Storage Temperature/Humidity:  $20\sim 30^{\circ}\text{C}$  / 20%~60% RH.

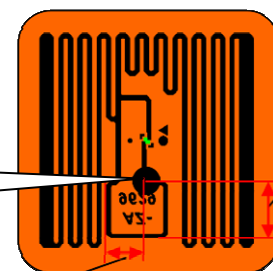
Life: 1 Year in vacuumed ESD bag under  $20\sim 30^{\circ}\text{C}$  / 20%~60% RH

## 4. Handling Precautions

Keep away from water and collision, do not bend.

Inlay Reject Mark

Dia  $5\pm 2\text{mm}$



$6.16\pm 1\text{mm}$

$4.25\pm 1\text{mm}$

## 5. Packaging

Standard Package: Vacuum package,  $5000\pm 100\text{pcs/Roll}$ , 4Roll/CT Actual QTY as per shipping mark.

